

Date: August 30, 2023

Attention: Warren Hansen c/o Sunshine Coast Community Forest

Re: Northern Goshawk (*Accipiter gentilis*) Assessment for the Sunshine Coast Community Forest: 2023 Assessments in Halfmoon Bay and East Wilson Tenure areas:

1.0 Introduction

McTavish Resource & Management Consultants Ltd. (McTavish) was engaged by the Sunshine Coast Community Forest (SCCF) to conduct surveys for the Northern Goshawk *laingi* subspecies (*Accipiter gentilis laingi*). The Northern Goshawk *laingi* subspecies is provincially red-listed and designated as Threatened under Schedule 1 of the *Species at Risk Act*. Current inventory data are limited on Sunshine Coast, with no known nest sites or breeding occupancy data and no Wildlife Habitat Areas (WHAs) currently established on the Sechelt Peninsula. The goal of this inventory was to assess the current breeding occupancy within select areas of the tenure; we expect to inventory more areas next year.

2.0 Methods

The assessment of Northern Goshawk occupancy involved two main components 1) desktop analysis and 2) field assessment. Prior to conducting the field assessment, a desktop analysis was performed to identify historical occurrences. The field survey locations were concentrated in the Halfmoon Bay and Wilson Creek tenure area, and survey locations were based on accessibility and areas of interest for timber harvesting, some were also conducted in areas of interest for the conservation network where forest types suggested promising habitat for Northern Goshawks.

Broadcast stations were surveyed with stations at 100 - 200 m intervals, and call-playbacks were conducted following provincial standards (RIC 2001, McClaren 2009). An electric game caller, FoxPro NX4 (FOXPRO Inc., Lewistown, PA) was used to broadcast the juvenile begging calls (early July – late August). It is important to note that the surveys were not intended to assess the biophysical attributes of the stand; instead, their purpose was to determine current occupancy status.

3.0 Results

Desktop Assessment

There are no designated Wildlife Habitat Areas (WHAs) or Critical Habitat areas that overlap with the SCCF's tenure (BC CDC 2023). The closest known historical occurrence was documented near Earls Cove / Ruby Lake (approximately 25 km away) (Madrone 2014). That historical observation included audio, visual evidence, and the presences of a plucking post, but no nest location. No nest sites have ever been recorded on the Sunshine Coast Peninsula (Madrone 2014). Additionally, iNaturalist, a citizen science project and social network dedicated to the identification and documentation of biodiversity, was consulted for potential records of Northern Goshawk. Three sightings have been recorded, one in Roberts Creek and Davis Bay near the Ocean, and one just North of Carlson Lake approximately 4 km north of the Halfmoon Bay tenure area. However, the one North Carlson Lake is questionable because the photo shows a Northern Goshawk sitting on a residential fence post, so the location may have some GPS error. None of the sighting records have any information on potential nest locations.



Field Assessment

Field assessment was carried out on July 7th and 8th of 2023 by Anna Yuill (RPBio) of McTavish and Laurie Kremsater (RPBio, R.P.F.) of LLK Consulting. The assessment spanned a two-day period covering a portion of the Halfmoon Bay and the Wilson Creek tenure areas.

The survey sites were accessed by both 4x4 and on foot. A total of 44 survey stations were conducted, this included 24 stations in Halfmoon Bay and 20 station in Wilson Creek (**Attachment 1**). Despite the efforts, no nests were discovered, and no detections were made. During the survey, a lone pluck site was observed in Halfmoon Bay; however, it remains inconclusive as to the species responsible for it.

4.0 Closing

Efforts to survey areas of interest in the Angus/Gray/Chapman tenure area are recommended for the spring and summer of 2024. If you have any questions, comments or require further information, please contact the undersigned.

Sincerely,

McTAVISH RESOURCE & MANAGEMENT CONSULTANTS LTD.

PREPARED BY:



Anna Yuill, M.Sc., R.P.Bio, F.I.T
Project Ecologist
E: anna@mctavishconsultants.ca

REVIEWED BY:



Laurie Kremsater, M.Sc., R.P.Bio, R.P.F
Senior Ecologist
E: lkremsater@gmail.com

Attachments (1)

Attachment 1 – Survey Stations



References

- [BC CDC] B.C. Conservation Data Centre. 2023. CDC iMap .
<https://www2.gov.bc.ca/gov/content/environment/plants-animals-ecosystems/conservation-data-centre/explore-cdc-data/species-and-ecosystems-explorer>
- [RIC] Resources Inventory Committee. 2001. Inventory methods for Raptors. Standards for Components of British Columbia's Biodiversity No. 11, Ministry of Environment, Lands and Parks, Resources Inventory Committee.
- McClaren, E. L. 2009. Suggested Protocol for Conducting Northern Goshawk Surveys within Established and Unknown Goshawk Nest Areas.
- [Madrone] Madrone Environmental Services Ltd. 2014. Northern Goshawk *laingi* Inventory on the South Coast: 2014 Field Survey Results.







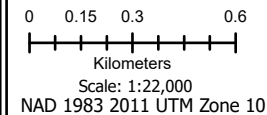
#203 – 19292 60 Avenue
Surrey BC
V3S 3M2

Attachment 3 Site Photos



Legend

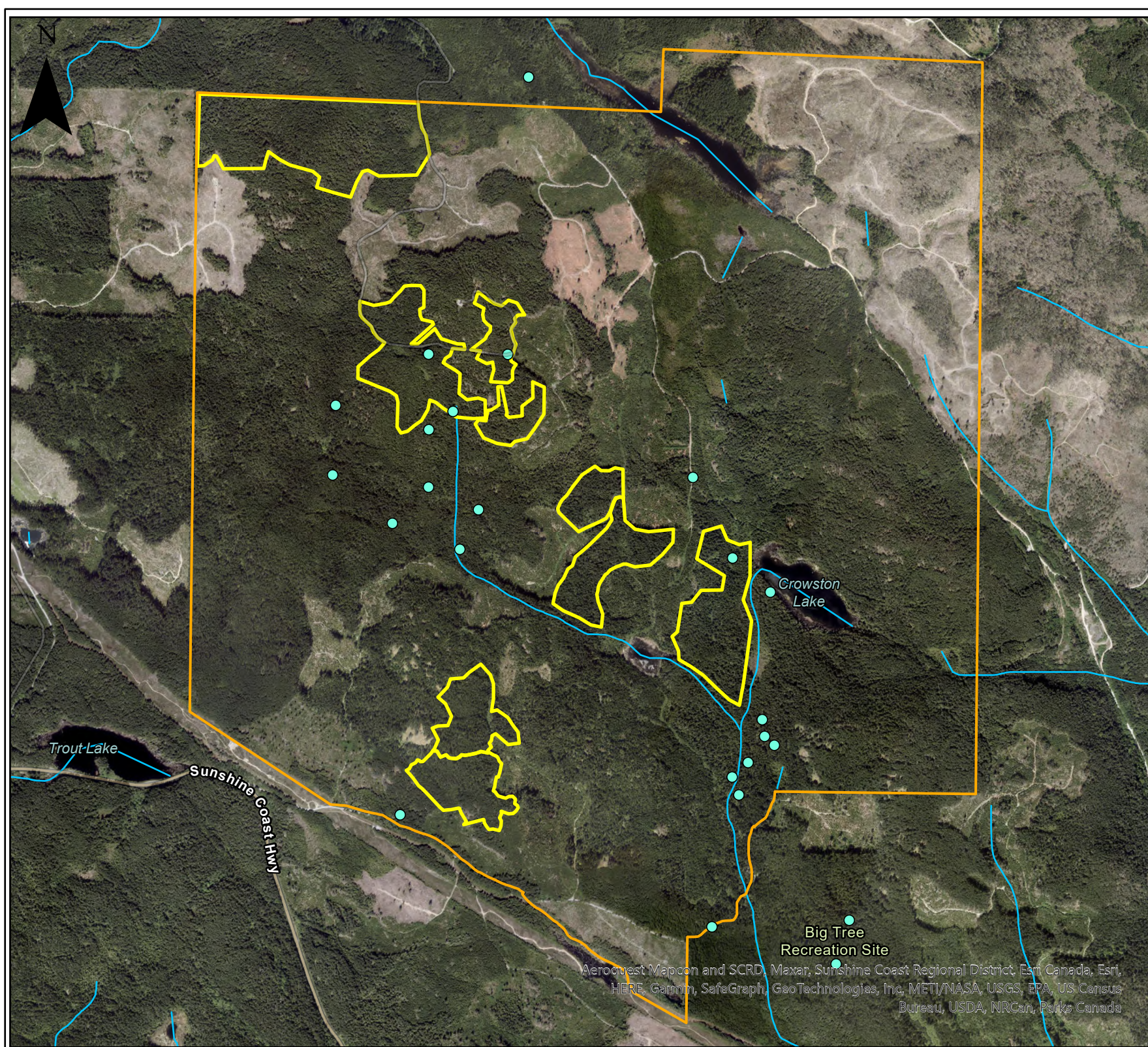
-  Tenure Area
-  Planning Blocks 2021 - 2025
-  Survey Stations
-  Streams

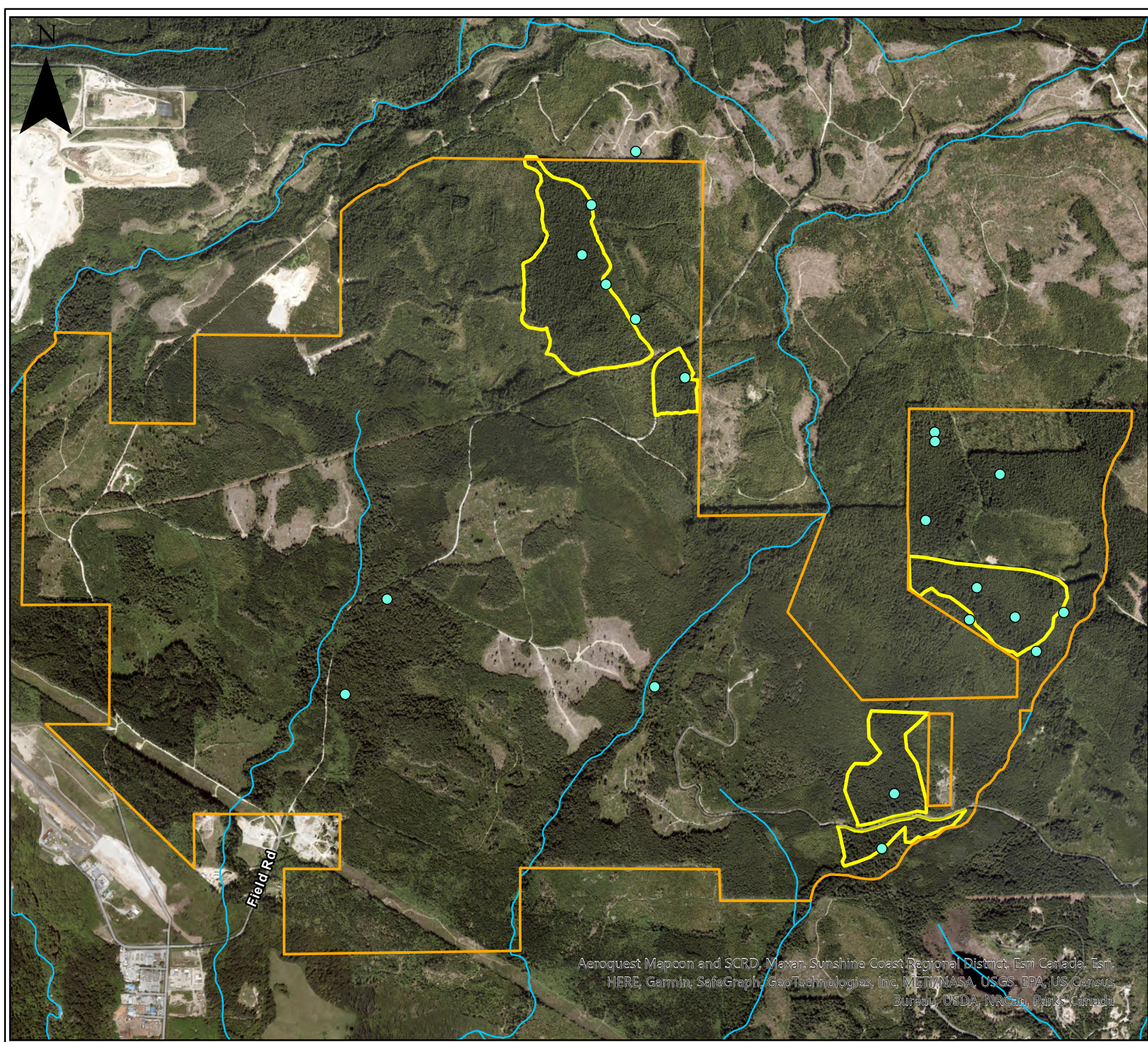


Project: Sunshine Coast Community Forest
Northern Goshawk Survey Stations
(July 7/8 2023)
Drawn By: Anna Yuill
Date Exported: 2023-08-28 5:57 PM



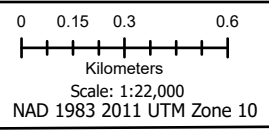
**Figure 1: Halfmoon Bay
Northern Goshawk
Survey Stations**





Legend

- Tenure Area
- Planning Blocks 2021 - 2025
- Survey Stations
- Streams



Project: Sunshine Coast Community Forest
 Northern Goshawk Survey Stations
 (July 7/8 2023)
 Drawn By: Anna Yuill
 Date Exported: 2023-08-28 5:59 PM



Aeroquest Mapcon and SCRD, Maxar, Sunshine Coast Regional District, Esri Canada, Esri, HERE, Garmin, SafeGraph, GeoTechnologies, Inc, METI/NASA, USGS, EPA, US Census Bureau, USDA, NRCan, Parks Canada

Figure 2: Wilson Creek Northern Goshawk Survey Stations