

Management Areas

- Riparian Stream Class-FISH: S1, S2, S3, S4 (Red line with 'S2')
- Unknown (Red line)
- Riparian Stream Class-NO FISH: S5, S6 (Blue line with 'S6')
- Unknown (Blue line)
- Non-classified Drainage (Green line)
- Seepage (Blue dashed line)
- Stream Class, Reach Break (SS, S6)
- Riparian Lake (L1-L4) (Blue area)
- Riparian Wetland (W1-W5) (Blue wavy area)
- Water Body ID # (A1)
- Retention Patch (Engineered) (Green hatched)
- Retention Patch (Proposed) (Light Green hatched)
- Adjacent Retention Patch (White hatched)
- Dispersed Retention Trees (Green tree icon)
- Dispersed Retention Trees (Group) (Green tree icon)
- Wildlife Tree Retention Area (WTRA) (Orange hatched)
- Adjacent Wildlife Tree Retention Area (AWTRA) (White hatched)
- Road Right-of-Way (Grey area)
- Riparian Reserve Zone (Pink area)
- Riparian Management Zone (if different than SU prescription) (Red hatched)
- Ground-Based Yarding Area (Green hatched)
- Helicopter Harvest Area (Yellow hatched)
- Ground Based Area >35% Slope (Red hatched)
- Windthrow Management Area (Black hatched)
- Machine Free Zone (MFZ) (Black box)
- Special Management Zone (SMZ) (Green box)
- Park (Green box)
- Water Supply Intake (Blue circle with 'i')
- Previous Harvest (NSR, SR, GU)
- Community Forest Boundary (Red outline)
- Community Watershed (Blue outline)
- Old Growth Mgmt. Area (Purple hatched)
- Ungulate Winter Range (Brown hatched)
- Private Land (Orange hatched)
- First Nations Treaty Area (Green outline)
- EBM Reserve (Light Green area)

Field Marking

- Falling Bdry: Orange Ribb. & Blazed Painted Orange
- Retention Patch: Orange Black Stripe Ribbon & Blazed Painted Orange
- Road Centre Line: Pink Ribb. & Blazed Painted Pink
- Road ROW: Orange Ribb. & Blazed Painted Orange
- Falling Corner: Blazed Painted Orange
- Dispersed Retention Trees: Orange Painted Dot Each Side & Base
- Special Mgt Zone: Orange Labelled Ribbon
- Fish Stream: Red White Stripe Ribbon
- Non Fish Stream: Blue White Stripe Ribb.
- Deflection Line: Green Ribbon
- Machine Free Zone: Red Ribbon
- Cruise Tree: Blue Painted Number

25m 0 25 50 100 150m
Scale: 1 : 5,000
Digital Mapping by:



Project Number: 21-610
Drawn By: HH / JC / MH
Date: 2023-09-19

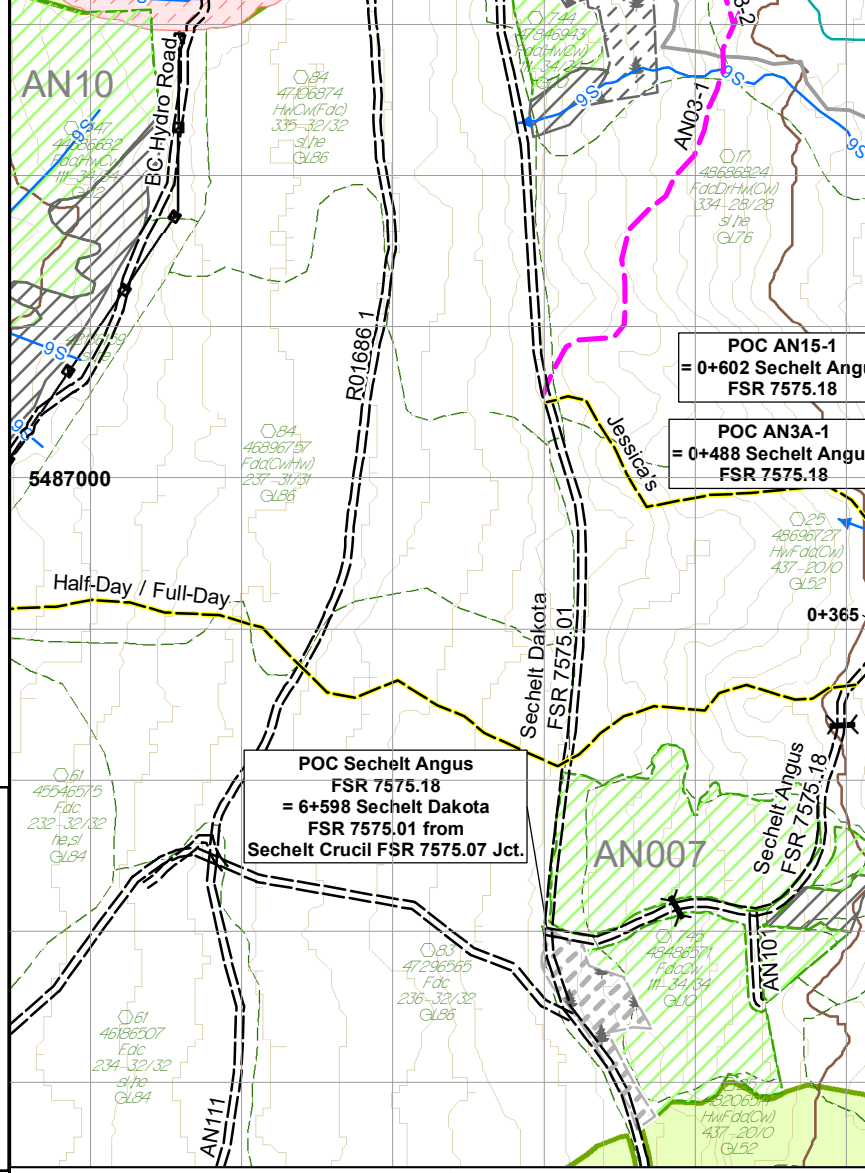
Harvest Plan / Road Construction Map Block AN3A

DRAFT

Culvert Summary					
Road Number	Road Station	Culvert Type	Culvert Dimensions		Culvert Skew
			Diameter	Length	
AN3A-1	0+006	CMP	500	9	120
AN3A-1	0+064	CMP	600	9	90
AN3A-2	0+007	CMP	500	9	130
AN3A-2	0+051	CMP	500	9	90
AN15-1	0+000	CMP	500	9	60
AN15-1	0+111	CMP	600	9	90
AN15-1	0+205	CMP	500	9	90

Road Construction Summary	
Road Section	Length (km)
AN3A-1	0.100
AN3A-2	0.059
Total Roads	0.159

Road Re-Construction Summary	
Road Section	Length (km)
AN15-1 (0+000 - 0+305)	0.305
Total Roads	0.305



Logging Area Summary (ha)							
Block	Gross	Retention	WTRA	RP RoW	NP Nat.	Exist.Rd.	Net Harv
AN3A	11.7	0.3	1.3	0.0	0.0	1.4	8.7

Harvest System Summary (ha)				
Block	Heli	Cable	Ground-Based	Total
AN3A	0.0	0.0	8.7	8.7



Block AN3A

Scale: 1:5,000
Region: RSC
District: DSC
Mapsheet: 092G052
Location: Angus Creek
UTM Zone: 10
UTM Easting: 447241
UTM Northing: 5487054
Latitude: 49°32'1.69"N
Longitude: 123°43'44.94"W
TAUP (ha): 11.7

Legend

- Total Area Under Prescription (TAUP):
 - Falling Boundary (Orange line)
 - External to Falling Bdy (Yellow line)
- Falling Corner (Red square)
- SP Plot (Purple circle)
- Standard Unit Boundary (Red dashed line)
- Treatment Unit Boundary (Black dashed line)
- Existing Road (Grey line)
- Existing Trail (Yellow line)
- Proposed Roads:
 - Haul Road (Pink dashed line)
 - Designated Skid Trail (Orange dashed line)
 - Temporary (Rehab) (Pink X-X line)
 - Backspar Trail (Purple dashed line)
 - Road Reconstruction (Red dashed line)
- Road Chainage (Black line with numbers)
- Bridge (Existing) (Black line with arch)
- Bridge (Proposed) (Black line with arch)
- Culvert Proposed/Existing (Black line with T)
- Survey Route (Black line with arrow)
- Unclassified Road (Black line)
- Rock Outcrop Area (Pink hatched)
- Proposed / Designated Stream Crossing (Blue line with diamond)
- Gravel Pit (Black square with 'GP')
- Transmission Line (Black line with crossbar)
- Utility Corridor (Black line with crossbar)
- Permanent Structures (Black square)
- Slide (Black line with 'S')
- Gully (Black line with 'G')
- Rock Outcrop (Black line with 'R')
- Windfall/Snag (Black line with 'S')
- Marsh/Swamp (Black line with 'M')
- Index Contour and Label (Brown line with number)
- Intermediate Contour (Brown line)
- Landing/Temporary Landing (Black diamond)
- Dryland Sort/Water Sort (Black circle with 'DS'/'VS')
- Log Dump/Helipad (Black circle with 'LD'/'H')
- Helicopter Drop Zone (Black circle with 'DZ')
- Geographic Centre (Black circle with 'X')

Harvest System

- Ground Based (Black arrow)
- Skylines (Black arrow with 'SL')
- High-lead (Black arrow)
- Harvest System Split Line (Green dashed line)
- Yarding Split Line (Red dashed line)

Stream Summary			
Stream Reach ID	Stream Class	Reserve Zone Width (m)	Mgmt. Zone Width (m)
D, F, E	S6	0	20
NCD-4, NCD-5, NCD-9, NCD-13	NCD	0	0